

EQUIPMENT SCHEDULE

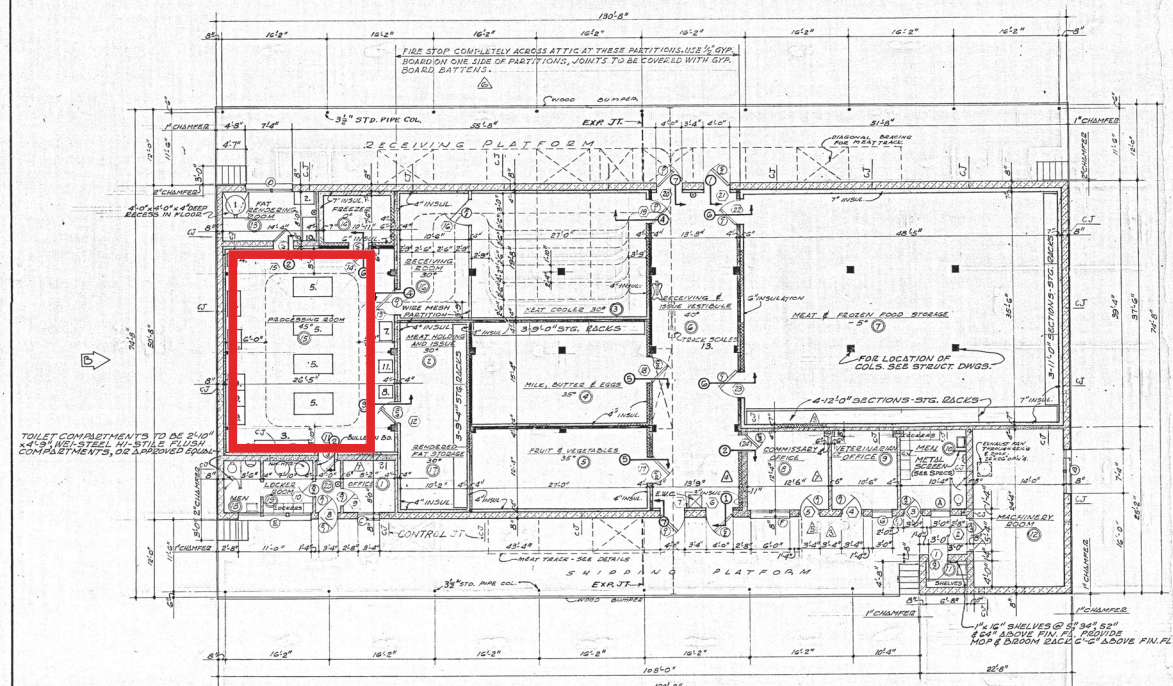
MARK	QTY	DESCRIPTION	UNIT	QUANTITY	PROVISION	BY	INSTALL
1	1	KETTLES, STEAM, 60 GALLON (GAS FIRED)	1	MC-2	GOVERNMENT	CONTRACTOR	
2	1	MIXING MACHINES, 80 QUART	1	MC-3	CONTRACTOR		
3	1	SCALE, PLATON TYPE, MODEL, 500# CAR	1	MC-1	GOVERNMENT		
4	1	SCALE, PLATON TYPE, MODEL, 500# CAR	1	MC-1	GOVERNMENT		
5	1	TABLE, WOOD, TYPE A GRADE 3, 72" X 36"	1	MC-9			
6	1	MACHINE, MEAT SLICING, SPACING, SAWBLADES, COMB	1	MC-4			
7	1	MACHINE, MEAT BONE & FAT CUTTING, HEAVY DUTY	1	MC-3			
8	1	DEVELOPER, MEAT, HEAVY DUTY, 100# PER MIN.	1	MC-11			
9	3	BLOCK, BUTCHERS, 30" X 30" X 18"	3				
10	1	SINK, POT WASHING, DBL. COMPT.	1	CB-5	CONTRACTOR		
11	1	SCALE, COUNTERTOP TYPE, 25# CAPACITY	1		GOVERNMENT		
12	1	SCALE, WEIGHING, PLATON TYPE, MODEL, 500# CAR	1	MC-5			
13	1	OVENBREAD TRAY SCALE (SINK DRAWING CONST.)	1	MC-8			

NOTE: FOR COMPLETE DESCRIPTION OF EQUIPMENT, SEE SPECS.

ROOM FINISH SCHEDULE

NO.	ROOM NAME	FLOOR	BASE	WALL	CEILING	REMARKS
1	OFFICE					
2	MEAT HOLDING & ISSUE - 30'					
3	MEAT COOLER - 30'					
4	MILK, BUTTER & EGGS - 55'					
5	FRUIT & VEGETABLES - 35'					
6	RECEIVING & STORAGE - 40'					
7	RECEIVING & STORAGE - 35'					
8	COMMISARY OFFICE					
9	RECEIVING OFFICE					
10	MEN'S LOCKERS & TOILET					
11	WOMEN'S LOCKERS					
12	WOMEN'S TOILET					
13	RECEIVING ROOM					
14	PAT RENDERING ROOM					
15	PREPARE - 35'					
16	RECEIVING ROOM - 45'					
17	RECEIVING ROOM - 35'					
18	RECEIVED PAT STORAGE - 35'					
19	MEN'S TOILET					
20	MEN'S LOCKER ROOM					
21	ENTRY CORRIDOR					

1. MASONRY WALLS IN ROOMS 1, 2, 3, 4, 5, 6, 7, 8, 9, 10, 11, 12, 13, 14, 15, 16, 17, 18, 19, 20 TO BE EXPOSED.
 2. CONT G.S.U. WAINSCOT BEHIND LOCKERS.
 3. ALL MASONRY TILES TO BE GRABE PROOF OVER SHEET METAL PARTS ON UNINSULATED FACES OF FRAME PARTITIONS.
 4. WIDE MESH PARTITIONS DIVIDING DOORS 3 & 4 TO BE WESTERN WIRE & IRON WORKS, INC., INDUSTRIAL STANDARD PARTITIONS #206, OR APPROVED EQUAL. SEE SPECS.



RECORD (AS BUILT) DRAWING

NO.	DATE	DESCRIPTION	BY
1	7-27-51	Added channel mainnet support.	
2	12-22-54	W/3" thickness increased between rooms 8 & 9 and rooms 1 & 20.	CHB
3	11-15-54	ADDED NOTE RE: AT TIC FIRE STOPS.	PHO
4	9-7-54	DELETE TWO SCREEN DOORS FROM OFFICES 5 & 9.	SSS
5	9-10-54	Triple glazed view windows removed from between Commissary Office and Receiving & Issue Vestibule.	PHO
6	7-30-54	DELETED VIEWING WINDOW REVISED LOCKER DIMENSIONS CHANGED SCREEN DOOR TYPE FOR DOOR 7 & 5.	PHO
7	6-7-54	REMOVED FROM SCHEDULE.	SSS
8	5-6-54	LOCATED MASONRY WALL CONTROL JOINTS. REVISED WALL THICKNESSES & DIMENSIONS FOR DOORS 7 & 5.	SSS

ASSOCIATED ARCHITECTS & ENGINEERS
 1000 N. W. 10th St., Fort Worth, Texas
 CORPUS OF ENGINEERS
 OFFICE OF THE DISTRICT ENGINEER
 FORT WORTH, TEXAS

DESIGNED BY: PERRIN AIR FORCE BASE, SHERMAN, TEXAS
 CHECKED BY: COLD STORAGE AND MEAT CUTTING PLANT
 DRAWN BY: FLOOR PLAN - DETAILS - SCHEDULES

APPROVED: [Signature]
 COL. C. L. DISTRICT ENGINEER

INVESTIGATION NO. ENG-34-086-54-75
 CONTRACT 4148
 SHEET 11 OF 11
 PFC-392.8

REVISED AND REISSUED BY TULSA DISTRICT

1288* 4029