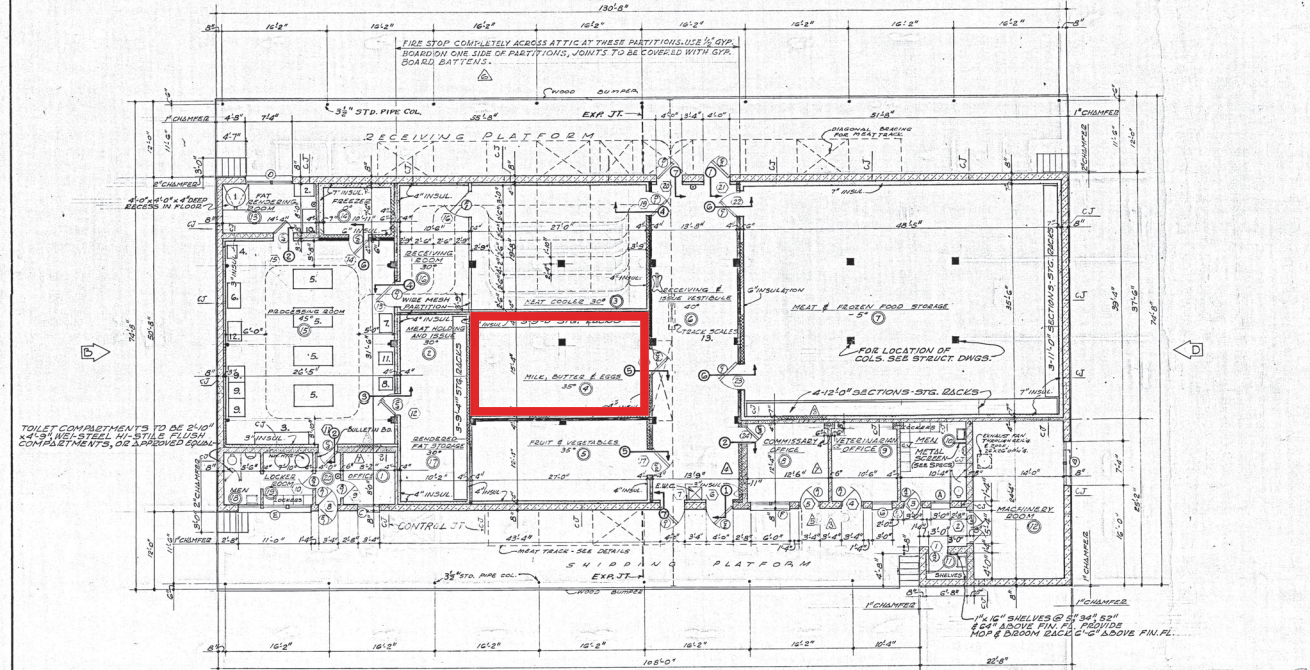


EQUIPMENT		SCHEDULE			
MARK NO.	DESCRIPTION	QUANTITY	PROVISION MADE	FURNISHED BY	INSTALLED BY
1	KETTLES, STEAM, 60 GALLON (GAS FIRED)	1	MC-2	GOVERNMENT	CONTRACTOR
2	MIXING MACHINES, 80 QUART	1	MC-3	CONTRACTOR	"
3	SCALE, PLATON TYPE, PORTABLE, 500# CAP.	1	MC-2	GOVERNMENT	"
4	SCALE, PLATON TYPE, PORTABLE, 500# CAP.	1	MC-2	GOVERNMENT	"
5	TABLE, WOOD, TYPE A GRADE 3, 72"x36"	2	MC-9	"	"
6	MACHINE, MEAT SLICING, SPACING, SARGELINE, COMB	1	MC-4	"	"
7	MACHINE, MEAT BORN # PAT CUTTING, HEAVY DUTY	1	MC-3	"	"
8	DEVELOPER, MEAT, HEAVY DUTY, 50# PER MIN.	1	MC-11	"	"
9	BLOCK, BUTCHERS, 30"x30"x18"	3	"	"	"
10	SINK, POT WASHING, DBL. COMPT.	1	CB-5	CONTRACTOR	"
11	SCALE, COUNTERTOP TYPE, 25# CAPACITY	1	"	GOVERNMENT	"
12	SCALE, MEASURING, PLATON, PORTABLE, 500# CAP.	1	MC-5	"	"
13	OVENBROD TRACK SCALE (SARGELINE COMB)	1	MC-5	"	"

NOTE: FOR COMPLETE DESCRIPTION OF EQUIPMENT, SEE SPECS.

ROOM FINISH SCHEDULE												REMARKS	
NO.	ROOM NAME	FLOOR	BASE	WALL	CEILING	DOOR	WINDOW	GLASS	GLASS	GLASS	GLASS		GLASS
1	OFFICE												
2	MEAT HOLDING & ISSUE - 30'												
3	MEAT COOLER - 30'												
4	MILK, BUTTER & EGGS - 35'												
5	FRUIT & VEGETABLES - 35'												
6	RECEIVING & STORAGE - 40'												
7	RECEIVING & STORAGE - 35'												
8	COMMUNAL OFFICE												
9	RECEIVING OFFICE												
10	MEN'S LOCKERS & TOILET												*SLURRY COAT ABOVE MAINSCOT
11	WOMEN'S TOILET												
12	LABORATORY ROOM												
13	PAT RENDERING ROOM												
14	RECEIVING ROOM - 35'												
15	RECEIVING ROOM - 35'												
16	RECEIVING ROOM - 35'												
17	RECEIVING PAT STORAGE - 35'												
18	MEN'S LOCKER ROOM												*SLURRY COAT ABOVE MAINSCOT
19	MEN'S LOCKER ROOM												
20	ENTRY CORRIDOR												

1. MAINWAY WALLS IN ROOMS 1, 8, 9, 11, 12 & 20 TO BE EXPOSED.
2. CONT G.S.U. MAINSCOT BEHIND LOCKERS.
3. ALL ASPHALT TILE TO BE GRABE ROOMS OVER ASPHALT FLOOR ON UNINSULATED FACES OF FRAME PARTITIONS.
4. WIDE MESH PARTITIONS DIVIDING DOORS 8 & 16 TO BE WESTERN WIRE & IRON WORKS, INC., INDUSTRY-STANDARD PARTITIONS #306, OR APPROVED EQUAL. SEE SPECS.



RECORD (AS BUILT) DRAWING

NO.	DATE	DESCRIPTION	BY
1	7-27-51	Added channel maincast support.	ML
2	12-22-54	W/11 thickness increased between rooms 8 & 9 and rooms 1 & 10.	CHB
3	11-15-54	ADDED NOTE RE: AT THE FIRE STOPS.	WAP
4	9-7-54	DELETE DOOR SCREEN DOORS FROM OFFICES 5 & 9.	WAP
5	9-10-54	Triple glazed view windows removed from between Commissary Office and Receiving & Issue Vestibule.	WAP
6	7-30-54	DELETED VIEWING WINDOW REVISED LOCKER DIMENSIONS CHANGED SCREEN DOOR TYPE FOR DOOR 7 & 5.	WAP
7	6-7-51	REMOVED FROM SCHEDULE.	WAP
8	5-6-51	LOCATED MAINWAY WALL CONTROL JOINTS. REVISED WALL THICKNESSES & DIMENSIONS FOR DOORS 7 & 5.	WAP

ASSOCIATED ARCHITECTS & ENGINEERS
 CORPUS OF ENGINEERS
 1000 WEST WASHINGTON ST.
 FORT WORTH, TEXAS

DESIGNED BY: [Signature]
 CHECKED BY: [Signature]
 DRAWN BY: [Signature]
 SCALE: 1/8" = 1'-0"

**PERRIN AIR FORCE BASE
 COLD STORAGE AND MEAT CUTTING PLANT
 FLOOR PLAN-DETAILS-SCHEDULES**

DATE: 12-28-54
 SHEET NO. 11 OF 11
 CONTRACT NO. 4148
 PFC-392.8

REVISED AND REISSUED BY TULSA DISTRICT

12-28-54 4029