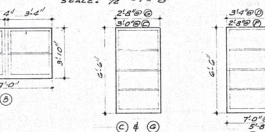
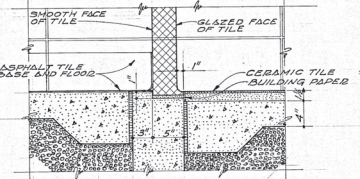


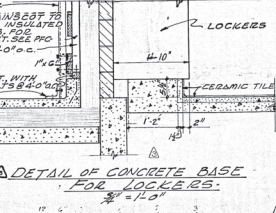
DOOR SCHEDULE
SCALE: 1/4" = 1'-0"



WINDOW SCHEDULE
SCALE: 1/4" = 1'-0"



DETAILS OF G.S.U. BASE
IN ROOMS 10, 16, & 18
SCALE: 1/2" = 1'-0"



DETAIL OF CONCRETE BASE
FOR LOCKERS
SCALE: 1/2" = 1'-0"

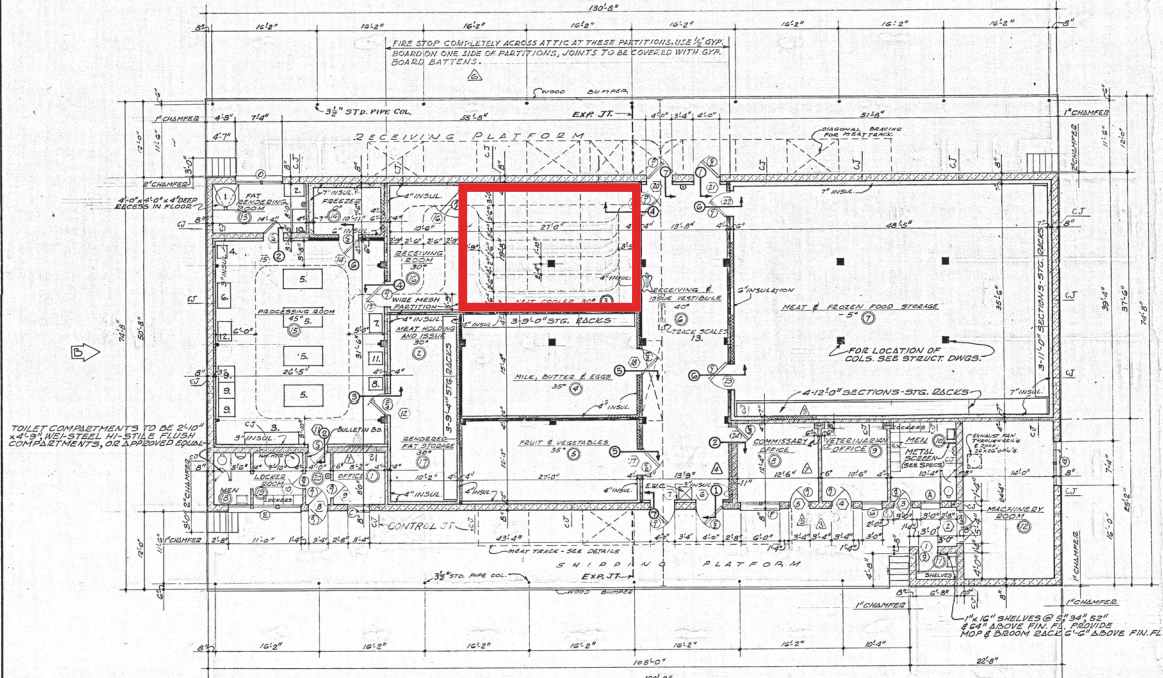
EQUIPMENT		SCHEDULE			
MARK	QTY	DESCRIPTION	QUANTITY	PROVIDED BY	INSTALLER
1	1	ETTLES, STRAIN, 60 GALLON (GAS FIRED)	1	MC-2	GOVERNMENT
2	1	MIXING MACHINES, 80 QUART	1	MC-3	CONTRACTOR
3	1	SCALE, 2' X 12" X 1/2" (CONCRETE)	1	MC-3	CONTRACTOR
4	1	SCALE, 2' X 12" X 1/2" (METAL)	1	MC-3	CONTRACTOR
5	1	TABLE, WOOD, TYPE A GRADE 3, 72" X 36"	1	MC-9	"
6	1	MACHINE, MEAT SLICING, SPACING, SAWBLADES, COMB	1	MC-4	"
7	1	MACHINE, MEAT BOON # 100 CUTTING, HEAVY DUTY	1	MC-3	"
8	1	DEVELOPER, MEAT, HEAVY DUTY, 100 PER MIN.	1	MC-11	"
9	3	BLOCKS, BUTCHERS, 30" X 30" X 1/2"	3	MC-1	"
10	1	SINK, POT WASHING, DBL. COMPT.	1	CB-5	CONTRACTOR
11	1	SCALE, COMBTYPE, 25" X 12"	1	MC-3	GOVERNMENT
12	1	SCALE, MEASURING, PLASTIC, 12" X 12" X 1/2"	1	MC-5	"
13	1	OVENBREAD TRAY SCALE (SINK DRAIN COMPT.)	1	MC-5	"

NOTE: FOR COMPLETE DESCRIPTION OF EQUIPMENT, SEE SPECS.

ROOM FINISH SCHEDULE

ROOM	ROOM NAME	FLOOR	WALLS	CEILING	REMARKS
1	OFFICE	CONCRETE	PLASTER	PLASTER	
2	MEAT HOLDING & ISSUE	CONCRETE	PLASTER	PLASTER	
3	MEAT COOLER	CONCRETE	PLASTER	PLASTER	
4	MILK, BUTTER & EGGS	CONCRETE	PLASTER	PLASTER	
5	FRUIT & VEGETABLES	CONCRETE	PLASTER	PLASTER	
6	RECEIVING & STORAGE	CONCRETE	PLASTER	PLASTER	
7	RECEIVING & STORAGE	CONCRETE	PLASTER	PLASTER	
8	RECEIVING & STORAGE	CONCRETE	PLASTER	PLASTER	
9	RECEIVING & STORAGE	CONCRETE	PLASTER	PLASTER	
10	MEN'S LOCKERS & TOILET	CONCRETE	PLASTER	PLASTER	
11	WOMEN'S LOCKERS	CONCRETE	PLASTER	PLASTER	
12	RECEIVING ROOM	CONCRETE	PLASTER	PLASTER	
13	PAT RENDERING ROOM	CONCRETE	PLASTER	PLASTER	
14	RECEIVING ROOM	CONCRETE	PLASTER	PLASTER	
15	RECEIVING ROOM	CONCRETE	PLASTER	PLASTER	
16	RECEIVING ROOM	CONCRETE	PLASTER	PLASTER	
17	RECEIVING ROOM	CONCRETE	PLASTER	PLASTER	
18	MEN'S LOCKER ROOM	CONCRETE	PLASTER	PLASTER	
19	MEN'S LOCKER ROOM	CONCRETE	PLASTER	PLASTER	
20	ENTRY CORRIDOR	CONCRETE	PLASTER	PLASTER	

1. MASONRY WALLS IN ROOMS 1, 2, 3, 4, 5, 6, 7, 8, 9, 10, 11, 12, 13, 14, 15, 16, 17, 18, 19, 20 TO BE EXPOSED.
 2. GROUT G.S.U. WAINSCOT BEHIND LOCKERS.
 3. ALL ASPHALT TILE TO BE GRABE PROOF ON UNINSULATED FACES OF FRAME PARTITIONS.
 4. WIDE MESH PARTITIONS DIVIDING DOORS 8 & 9 TO BE WESTON WIRE & IRON WORKS, INC., INDUSTRY-STANDARD PARTITIONS #206, OR APPROVED EQUAL. SEE SPECS.



NOTE: FOR DETAILS OF MEAT STORAGE RACKS, SEE PFC-395
 * FLOOR PLAN *
 1/4" = 1'-0"

NOTE: @ INDICATES LOCATION OF FIRE EXTINGUISHER.

RECORD (AS BUILT) DRAWING

NO.	DATE	DESCRIPTION	BY
1	7-27-51	Added channel mainnet support.	ML
2	12-22-54	W/11 thickness increased between rooms 8 & 9 and rooms 1 & 20.	CHB
3	11-15-54	ADDED NOTE RE: AT THE FIRE STOPS.	ML
4	9-7-54	DELETE TWO SCREEN DOORS FROM OFFICES 5 & 9.	ML
5	9-10-54	Triple glazed view windows removed from between Commissary Office and Receiving & Issue Vestibule.	ML
6	7-30-54	DELETED VIEW WINDOW REVISED LOCKER DIMENSIONS CHANGED SCREEN DOOR TYPE FOR DOOR 7 & 5.	ML
7	6-7-54	REMOVED FROM SCHEDULE.	ML
8	5-6-54	LOCATED MASONRY WALL CONTROL JOINTS. REVISED WALL THICKNESSES & DIMENSIONS FOR DOORS 7 & 5.	ML

REVISED AND REISSUED BY TULSA DISTRICT

ASSOCIATED ARCHITECTS & ENGINEERS
 1001 WEST 10TH AVENUE
 SHERMAN, TEXAS

CORPS OF ENGINEERS
 OFFICE OF THE DISTRICT ENGINEER
 FORT WORTH, TEXAS

PROJECT: PERRIN AIR FORCE BASE
 COLD STORAGE AND MEAT CUTTING PLANT
 FLOOR PLAN - DETAILS - SCHEDULES

DESIGNED BY: [Signature]
 CHECKED BY: [Signature]
 DRAWN BY: [Signature]
 SCALE: 1/4" = 1'-0"

INVESTIGATION NO. ENG-34-086-54-75
 SHEET 11 OF 11
 CONTRACT 4148
 PFC-392.8